
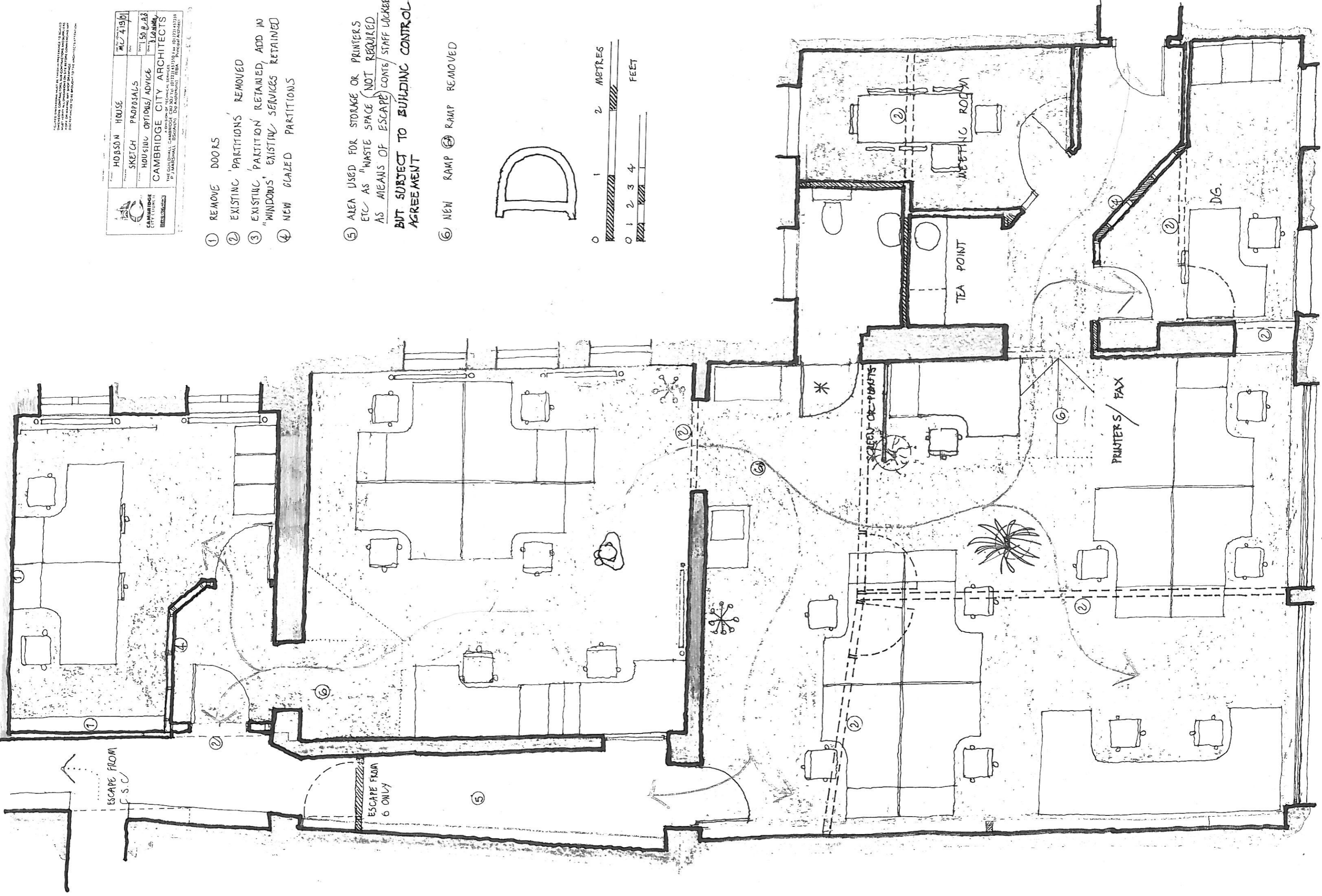
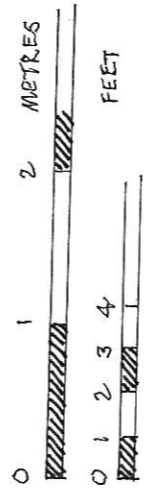
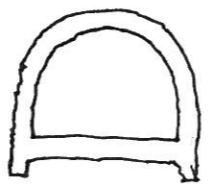


THIS DRAWING IS THE PROPERTY OF CAMBRIDGE CITY ARCHITECTS AND IS NOT TO BE REPRODUCED OR COPIED IN ANY MANNER WITHOUT THE WRITTEN PERMISSION OF CAMBRIDGE CITY ARCHITECTS. THE CLIENT IS RESPONSIBLE FOR THE ACCURACY OF THE INFORMATION PROVIDED AND FOR OBTAINING ALL NECESSARY PERMITS AND APPROVALS. THE ARCHITECTS ACCEPT NO LIABILITY FOR THE CONSEQUENCES OF ANY ACTION TAKEN OR NOT TAKEN IN RELIANCE ON THIS DRAWING.

	HOBSON HOUSE	NO. 419/01
SKETCH	PROPOSALS	
HOUSING OPTIONS/ADVICE	150 @ A3	
CAMBRIDGE CITY ARCHITECTS		
A DIVISION OF TECHNICAL SERVICES		
THE COLLEGE CHURCH, 100 MARKET STREET, CAMBRIDGE CB2 3RQ		
P. J. MARSHALL, DESIGNER, CIBSE (C) 2003/04, RIBA (C) 2003/04, RIBA (C) 2003/04		

- ① REMOVE DOORS
- ② EXISTING PARTITIONS REMOVED
- ③ EXISTING PARTITION RETAINED, ADD IN "WINDOWS" EXISTING SERVICES RETAINED
- ④ NEW GLAZED PARTITIONS
- ⑤ AREA USED FOR STORAGE OR PRINTERS ETC AS "WASTE SPACE" NOT REQUIRED AS MEANS OF ESCAPE (CONC. STAFF LOCKER BUT SUBJECT TO BUILDING CONTROL AGREEMENT)
- ⑥ NEW RAMP (R) RAMP REMOVED



ESCAPE FROM S.C.

ESCAPE FROM 6 ONLY

SCAFFOLD PARTS

TEA POINT

MEETING ROOM

PRINTERS/FAX

DG